

# KYROS COMPRESSORS



**KYROS COMPRESSORS**

We are ISO Certified Company

[www.kyroscompressors.com](http://www.kyroscompressors.com) (M) : +91 97149 79030 / 84878 11248

## FOUNDER MESSAGE



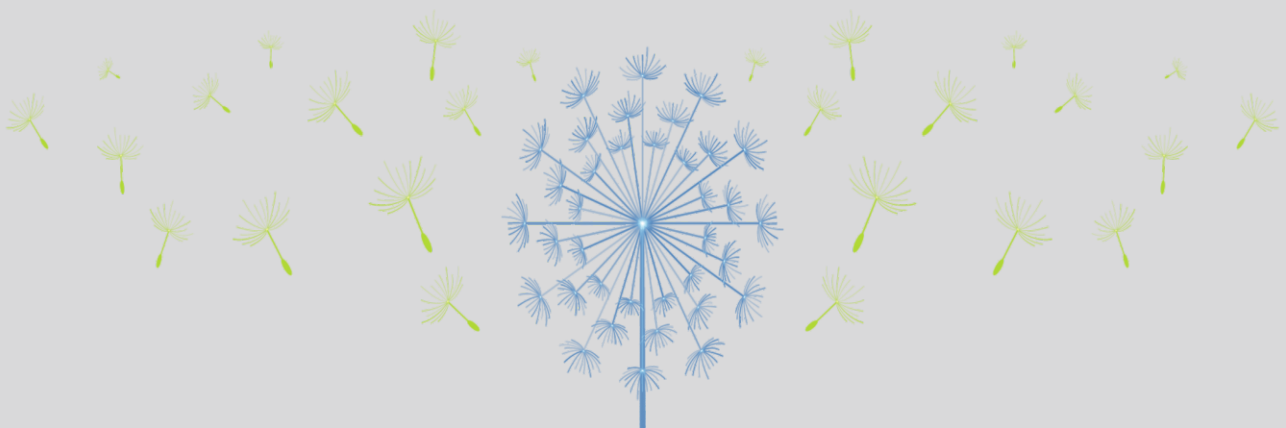
Kyros Compressors is located in Ahmedabad District, Gujarat, India with its two plants. One in Ahmedabad and Second in Gurgaon with transportation facilities and hardware, equipment, production. Long term market development and continues high and products.

The Company's business has since built with a stable, young, creative and professional technology and corporate spirit of the corporative management team.

The company mainly engaged in manufacturing different types of air compressor such as a permanent magnet synchronize screw compressor, fixed type Screw compressor, oil free Compressor, piston type reciprocating compressor, Air Dryer Air Receiver Tank and Filters.

The company's products are widely used in Industry, including, matching, light industries, textile, food, petrolizum, chemical, mining, cement, phasma, pharma, electric power, medical research and other industries.

"Quality and service is first for customer, that is our core value." We are sincerely willing to look forward to co-operating with you and becoming your business partners.

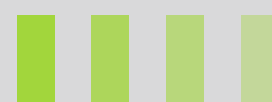


# PIPING PARAMETER & SELECTION



FLOW RATE			LENGTH									
			164ft	328ft	492ft	984ft	1640ft	2460ft	3280ft	4265ft	5249ft	6561ft
Nm3/hr	NI/min	cfm	50m	100m	150m	300m	500m	750m	1000m	1300m	1600m	2000m
10	167	6	16.5	16.5	16.5	16.5	16.5	16.5	16.5	25	25	25
30	500	18	16.5	16.5	16.5	25	25	25	25	25	25	40
50	833	29	16.5	25	25	25	25	25	40	40	40	40
70	1167	41	25	25	25	25	40	40	40	40	40	40
100	1667	59	25	25	25	40	40	40	40	40	40	63
150	2500	88	25	40	40	40	40	40	40	63	40	63
250	4167	147	40	40	40	40	63	63	63	63	63	63
350	5833	206	40	40	40	63	63	63	63	63	63	76
500	8333	294	40	40	63	63	63	63	63	76	63	76
750	12500	441	40	63	63	63	63	76	76	76	76	100
1000	16667	589	63	63	63	63	63	76	76	100	76	100

# AIR FLOW UNIT CONVERSION

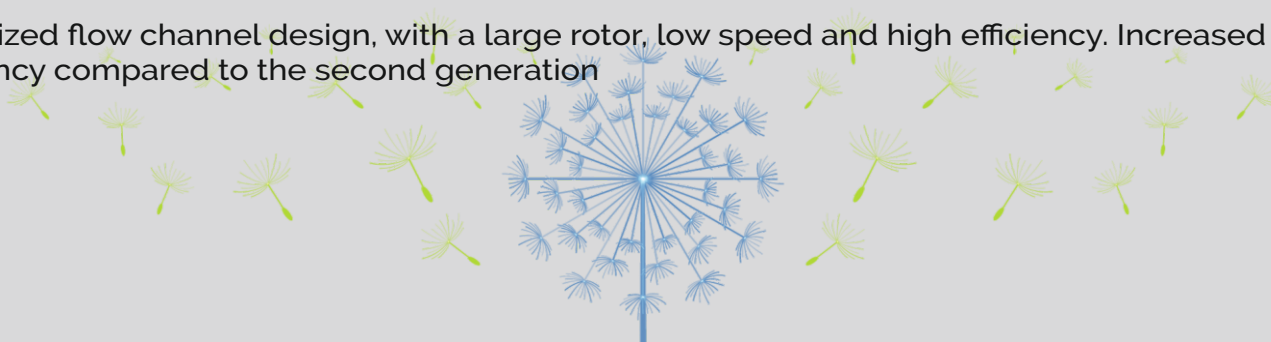


**AIR – END**

AIR FLOW	SYMBOL	CONVERT TO	CONVERSION FACTOR
Cubic feet per minute	scfm	m3/h	x1.699
Cubic feet per minute	scfm	m3/min	x0.0283
Cubic feet per minute	scfm	l/min	x28.316
Cubic feet per minute	scfm	l/sec	x0.4719
Cubic meters per minute	m3/min	scfm	x35.315
Cubic meters per minute	m3/h	scfm	x05885
Liters per minute	l/min	scfm	x0.0353
Liters per second	l/sec	scfm	x2.119

Adopts the international top-level third-generation asymmetric wire tire twin-screw air end, adheres to the exquisite manufacturing process, adopts the peak high efficiency low-pressure, high-efficiency tooth shape and axial air inlet design.

Optimized flow channel design, with a large rotor, low speed and high efficiency. Increased energy efficiency compared to the second generation



## MOTER



The motor uses high-performance motors of well-known brands. Permanent magnet synchronous motors (PM motor) use high-performance NdFeB permanent magnets which will not lose magnetism under 200° and its service life reaches as long life.

The stator coil uses the frequency converter special halo proof enameled wire; the insulation is outstanding and the service life is longer.

The motor has the function of temperature protection. It also has a wide range of motor speed regulation, high precision and wide range of volume regulation. The reliability is significantly improved with small size, low noise and large excess current Protection grade I P55, insulation grade F, effectively protects the motor and increases the service life of the motor, the efficiency is 5%-7% higher than similar products.

## FAN



The fan uses a large fan design to effectively enhance the fan's heat dissipation effect. The motor adopts a special internal design to adapt to harsh working conditions.

The fan motor adopts special winding and high protection grade design to adapt to harsh working conditions.

The fan is controlled by the controller to realize the automatic start and stop function, which effectively maintains the normal working temperature of the air compressor lubricant.

## COLLER



The heat exchanger uses high-quality raw materials and a unique internal channel design, which increases the heat exchange area and can effectively dissipate heat for the air compressor.

The inner wall of the heat exchanger is treated with corrosion protection to increase the service life of the heat exchanger and increase the heat transfer effect

The radiator has passed the strict factory test, and the quality is reliable, which effectively prevents the high temperature of the air compressor and increases the service life of the machine.

## CONTROLLER



Adopts PLC multi language control system, beautiful and intuitive interface, easy to operate function, operators can quickly and easily adjust the compressor.

14 protection functions such as overload protection, short circuit protection, reverse protection, low temperature protection. high voltage protection, etc. to fully protect the unit.

The advanced microcomputer control drive system realizes intelligent control, air volume variable speed control, automatic adjustment of load start and soft start. Intelligent dynamic control, dynamic display of the working status of each component of the compressor, visual pressure, temperature, current working curve, etc

Large memory and equipped with printer interface; It can use computer remote monitoring or multiple linkage control between air compressors.

## INVERTER



The standard is equipped with high frequency reactor, effectively reducing the frequency converter and the external magnetic field dry reactance.

Reliably reduces peak current when it is started, realizes stable starting With high-performance current vector technology, it can easily drive induction motors.

High performance, high quality and high-power density design, as well as significant improvements in usability, maintainability, environmental protection, installation space, and design standards, can further optimize the user experience

Independent air duct design, resistances to all kinds of severe environmental pollution Rapidly track the change of pressure and control pressure fluctuation within  $\pm 0.01\text{Mpa}$ , optimal power is used to accurately provide necessary air.

## OIL FILTER



Adopts high-density filter material, the surface is treated with nano-electroplating.

The filter element has uniform pore size, small filter resistance, large flux, strong interception ability and long service life.

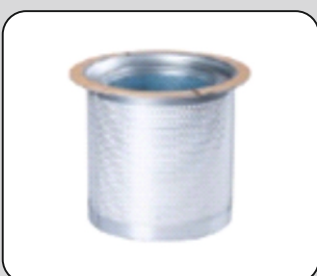
High filtration accuracy effectively filters impurities in lubricating oil, prolongs the service life of the equipment.

## AIR FILTER



Adopting a design with high dust holding capacity and low flow resistance, which can filter out tiny fixed particles in the air. The dust removal effect can reach 99.5%, ensuring the normal operation of the components of the system and extending the service life.

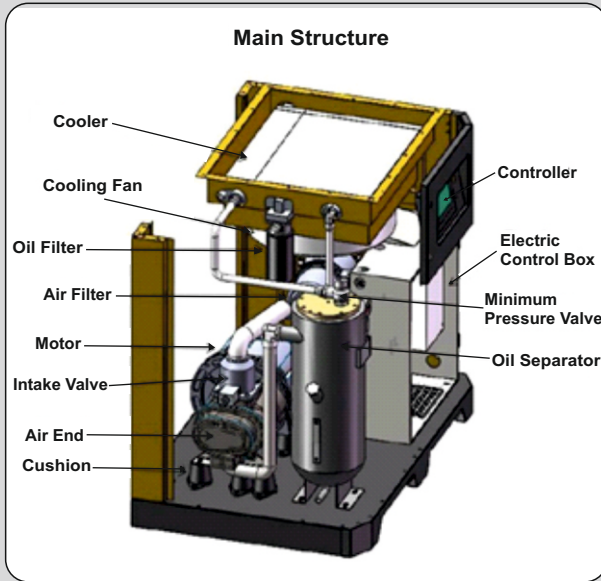
## AIR OIL SEPRATOR



The high-quality air-oil separation element and gas-liquid filter element are equipped with advanced three-stage air-oil separation to keep the oil content below 3ppm to ensure the output of high-quality compressed air.



# B1 SERIES FIXED SPEED SCREW AIR COMPRESSOR



## AIR OIL SEPARATOR CORE

Adopts industry-leading screw air end, high efficiency and Low rotating speed. With the third-generation tooth type of rotor, cutting-edge geometric design-stable, reliable, energy saving and long service life.

## FLEXIBLE COUPLING DIRECT DRIVEN

Adopts direct connection structure without any Loss, transmission efficiency is 100%, maintenance cost is low, disassemble is convenient, greatly save the downtime. Easy maintenance--air end maintenance only need to disassemble the air end, motor maintenance only needs to disassemble motor, do not affect each other.

## INTELLIGENT MICROCOMPUTER CONTROL SYSTEM

Adopts intelligent control system to ensure fully automated intelligent operation, detect exhaust pressure, temperature and other field data, and control the exhaust pressure within the pre-set pressure range through the intake valve, so as to output stable pressure.

## SAFE, RELIABLE AND EFFICIENT MOTOR

Adopts unique low-speed motor, protection grade Lp55, insulation grade F, suitable for bad working conditions. High balance precision, high-speed running smoothly

## UNIQUE HEAT REMOVAL & COOLING SYSTEM

Adopts advanced design, harmonica radiator, effectively increase the heat dissipation area, run faster and smoother, and the heat of the machine in time. The heat exchange effect of the same area is 30% higher than that of the traditional cooler. Even in the Asia-Pacific region with high temperature and high humidity, the normal operation of the unit can be guaranteed.



# B2 SERIES PM VSD SCREW AIR COMPRESSOR



## INTELLIGENT CONTROL SYSTEM

Direct display of discharge temperature and pressure, operating frequency, current, power, operating state. Realtime monitoring of discharge temperature and pressure, current, frequency fluctuations.

## THE LATEST GENERATION HIGH EFFICIENCY PERMANENT MOTOR

Insulation grade F, protective grade IP55, suitable for the bad working conditions. No gearbox design, motor and main rotor through the coupling directly connected, high transmission efficiency. Wide range of speed regulation, high precision, wide range of air flow regulation. The efficiency of the permanent magnet motor is higher 3%-5% than regular motor, efficiency is constant, when the speed drops, still remain the high efficiency

## THE LATEST GENERATION SUPER STABLE INVERTER

Constant pressure air supply, air supply pressure is accurately controlled within a 0.1 Mpa. Constant temperature air supply, general constant temperature set at 85℃, make the best oil Lubrication effect and avoid high temperature to stop. No empty load, reduce energy consumption by 45%, eliminate excess pressure. Vector air supply, accurate calculation, to ensure that the air compressor production and customer system air demand at all times to maintain the same.

## WIDE WORKING FREQUENCY RANGE TO SAVE ENERGY

Frequency conversion ranges from 5% to 100%. When the user air fluctuation is large, the more obvious energy saving effect and the lower the low-frequency running noise, applicable to any place.

## LOW NOISE

The inverter is a soft start device, the start-up impact very small. noise will be very low when start-up. At the same time, PM VSD compressor running frequency is less than the fixed speed compressor during stable operation, mechanical noise decreases very much.

## SMALL START UP IMPACT

Direct display of discharge temperature and pressure, operating frequency, current, power, operating state. Real time, monitoring of discharge temperature and pressure, current, frequency fluctuations.



# TECHNICAL SPECIFICATION - FIXED SPEED



MODEL	PRESSURE	INSTALLED MOTER RATING (KW)	CFM	M <sup>3</sup> / MIN	MACHINE DIMENSION (L*B*H) MM / (WEIGHT) KG	NOISE (dB)	AIR OUTLET (INCH)
KC - 10HP D	08 / 10 / 13	7.5	46 / 34 / 30	1.3 / 0.96 / 0.85	900*600*800 / 220	60 ± 2	G 1/2"
KC - 15HP D	08 / 10 / 13	11	65 / 46 / 39	1.84 / 1.3 / 1.1	1100*730*980* / 350	62 ± 2	G 3/4"
KC - 20HP D	08 / 10 / 13	15	88 / 71 / 60	2.49 / 2.01 / 1.7	1100*730*980 / 360	62 ± 2	G 3/4"
KC - 25HP D	08 / 10 / 13	18.5	113 / 95 / 78	3.2 / 2.69 / 2.21	1200*880*1080 / 510	64 ± 2	G 1"
KC - 30HP D	08 / 10 / 13	22	131 / 113 / 99	3.71 / 3.2 / 2.8	1200*880*1080 / 510	64 ± 2	G 1"
KC - 40HP D	08 / 10 / 13	30	181 / 160 / 124	5.12 / 4.53 / 3.51	1460*980*1230* / 650	66 ± 2	G 1 1/2"
KC - 50HP D	08 / 10 / 13	37	240 / 191 / 138	6.8 / 5.41 / 3.91	1460*980*1230 / 700	66 ± 2	G 1 1/2"
KC - 60HP D	08 / 10 / 13	45	275 / 242 / 212	7.8 / 6.9 / 6.00	1460*980*1230 / 780	66 ± 2	G 1 1/2"
KC - 75HP D	08 / 10 / 13	55	365 / 307 / 265	10.33 / 8.69 / 7.5	1750*1280*1590 / 1250	68 ± 2	G 2"
KC - 100HP D	08 / 10 / 13	75	476 / 410 / 346	13.48 / 11.61 / 9.8	1750*1280*1590 / 1350	68 ± 2	G 2"
KC - 120HP D	08 / 10 / 13	90	561 / 501 / 419	15.88 / 14.18 / 11.86	2450*1660*1700 / 1950	70 ± 2	G 2 1/2"
KC - 150HP D	08 / 10 / 13	110	717 / 600 / 516	20.3 / 16.99 / 14.61	2450*1660*1700 / 2200	70 ± 2	G 2 1/2"
KC - 175HP D	08 / 10 / 13	132	883 / 706 / 636	25 / 19.99 / 18.01	2450*1660*1700 / 2500	70 ± 2	G 2 1/2"
KC - 220HP D	08 / 10 / 13	160	1035 / 930 / 740	29.3 / 26.33 / 20.95	2700*1460*1900 / 3480	78 ± 2	G 3"

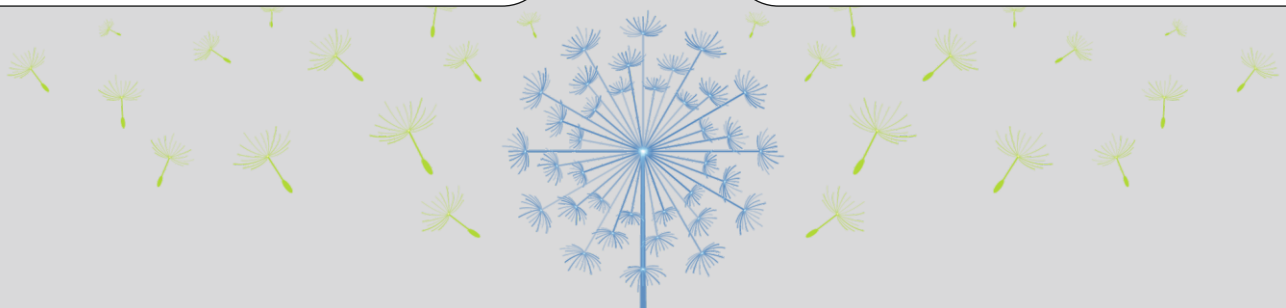
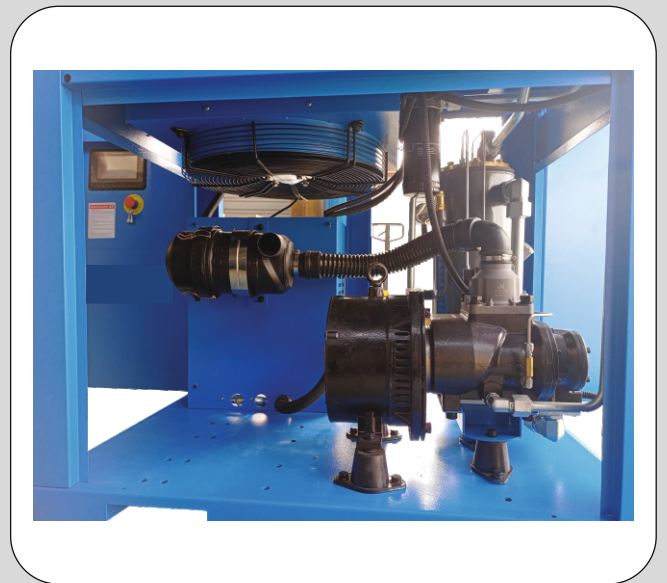




# TECHNICAL SPECIFICATION - PM MACHINE



MODEL	PRESSURE	INSTALLED MOTOR RATING (KW)	CFM	M <sup>3</sup> / MIN	MACHINE DIMENSION (L*B*H) MM / (WEIGHT) KG	NOISE (dB)	AIR OUTLET (INCH)
KC - 10HP PMV	08 / 10 / 13	7.5	46 / 34 / 30	1.3 / 0.96 / 0.85	900*600*800 / 220	60 + 2	G 1/2"
KC - 15HP PMV	08 / 10 / 13	65	65 / 46 / 39	1.84 / 1.3 / 1.1	1100*730*980 / 350	62 + 2	G 3/4"
KC - 20HP PMV	08 / 10 / 13	15	88 / 71 / 60	2.49 / 2.01 / 1.7	1100*730*980 / 360	62 + 2	G 3/4"
KC - 25HP PMV	08 / 10 / 13	18.5	113 / 95 / 78	3.2 / 2.69 / 2.21	1200*880*1080 / 510	64 + 2	G 1"
KC - 30HP PMV	08 / 10 / 13	22	131 / 113 / 99	3.71 / 3.2 / 2.8	1200*880*1080 / 510	64 + 2	G 1"
KC - 40HP PMV	08 / 10 / 13	30	181 / 160 / 124	5.12 / 4.53 / 3.51	1460*980*1230 / 650	66 + 2	G1 1/2"
KC - 50HP PMV	08 / 10 / 13	37	240 / 191 / 138	6.8 / 5.41 / 3.91	1460*980*1230 / 700	66 + 2	G1 1/2"
KC - 60HP PMV	08 / 10 / 13	45	275 / 242 / 212	7.8 / 6.9 / 6.00	1460*980*1230 / 780	66 + 2	G1 1/2"
KC - 75HP PMV	08 / 10 / 13	55	365 / 307 / 265	10.33 / 8.69 / 7.5	1750*1280*1590 / 1250	68 + 2	G 2"
KC - 100HP PMV	08 / 10 / 13	75	476 / 410 / 346	13.48 / 11.61 / 9.8	1750*1280*1590 / 1350	68 + 2	G 2"
KC - 120HP PMV:	08 / 10 / 13	90	561 / 501 / 419	15.88 / 14.18 / 11.86	2450*1660*1700 / 1950	70 + 2	G 2 1/2:
KC - 150HP PMV	08 / 10 / 13	110	717 / 600 / 516	20.3 / 16.99 / 14.61	2450*1660*1700 / 2200	70 + 2	G 2 1/2
KC - 175HP PMV	08 / 10 / 13	132	883 / 706 / 636	25 / 19.99 / 18.01	2450*1660*1700 / 2500	70 + 2	G 2 1/2
KC - 220HP PMV	08 / 10 / 13	160	1035 / 930 / 740	29.3 / 26.33 / 20.95	2700*1460*1900 / 3480	78 + 2	G 3"



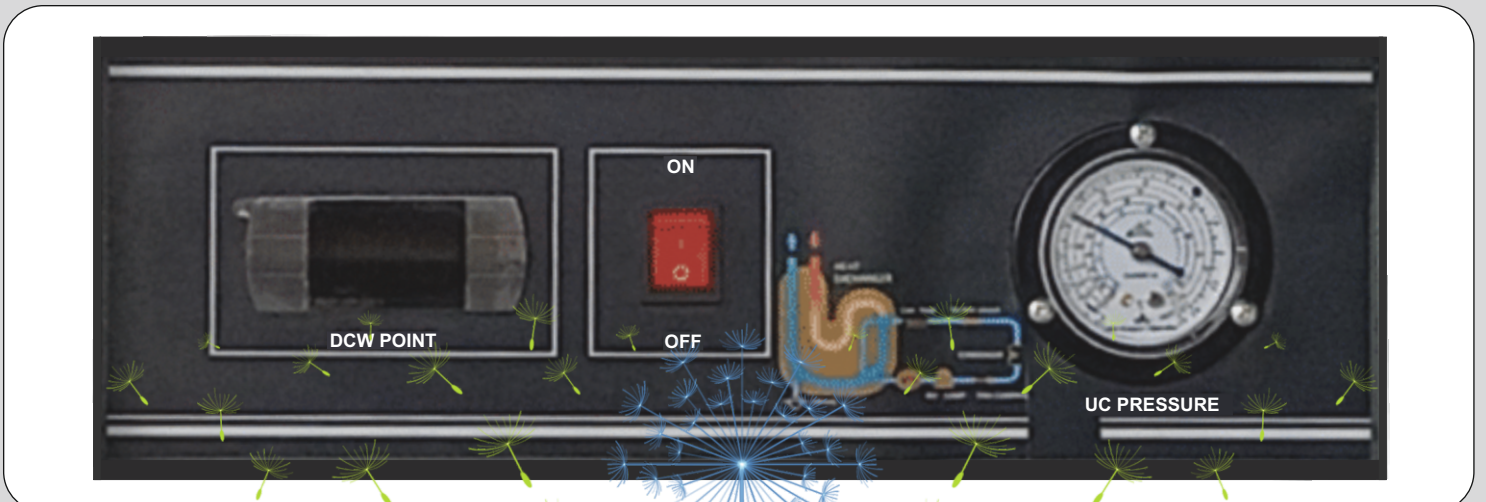
# REFRIGERATED AIR DRYER



## FEATURES

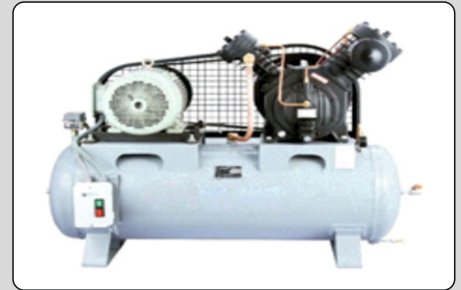
- Easy Installation
- Less Maintenance
- Environment Friendly
- Power saving
- Inlet temperature 40°C degree
- Dew point 2°C - 3°C degree

BASE MODEL	CFM	PRESSURE	AIR CONNECTION IN/OUT	RATED POWER* KW AIR COOLED
KC - 10AD	45	16	1/2 BSP(F)	0.2
KC - 15AD	68	16	1BSP(F)	0.4
KC - 20AD	85	16	1BSP(F)	0.5
KC - 25AD	100	16	1 1/2 BSP(F)	0.6
KC - 30AD	134	16	1BSP(F)	1
KC - 40AD	180	16	1 1/2 BSP(F)	0.9
KC - 50AD	250	16	2 BSP(F)	1.4
KC - 60AD	300	16	2 BSP(F)	1.6
KC - 75AD	400	16	2 BSP(F)	1.9
KC - 100AD	500	16	3NBASME Flg	2.3
KC - 125AD	600	16	3"NBASME Flg	2.8
KC - 180AD	800	16	3"NBASME Flg	3.8
KC - 220AD	1000	16	4"NBASME Flg	5
KC - 250AD	1250	16	4"NBASME Flg	5.7
KC - 300AD	1500	12.5	5"NBASME Flg	6.8
KC - 400AD	2000	12.5	6"NBASME Flg	8.7
KC - 500AD	2500	12.5	6"NBASME Flg	11



## BELT DRIVEN TWO STAGE AIR COMPRESSOR

This Air Compressor are built with shorter air filling time, energy saving, longer product life & especially suitable for industrial application. They suitable for two-wheeler & four wheeler garage, plastic industries steel fabrication, foundries, sand blasting, paper industries, packing plant. Air Compressors range start from 03 HP - 20 HP



MODEL NO.	HP	TANK	CFM	PRESSURE	WEIGHT
KC-0316	3	160	9.79	12.3 KG	200
KC-0525	5	225	17.32	12.3 Kg	220
KC-7525	7.5	225	26.42	12.3 KG	270
KC-1030	10	300	33.4	12.3 KG	320
KC-1550	15	500	55	12.3 KG	450
KC-2050	20	500	65	12.3 KG	500

## MICRO FILTER

### PRE FILTER

As a Primary filter practice whose diameter more than 1 micron meter can be removed, the maximum residual oil content in negligible.

### AFTER FILTER

High efficiency general protection dust particles, water mist & oil mist whose diameter more 1.01 micro meter can be removed the residue content of oil mist. does no exceed its level.

### CARBON FILTER

High efficiency oil removal filtration general, dust particles, water mist & oil mist whose diameter more 0.03 micro meter can be removed the residue content of oil mist does not exceed its level.

## MICRO FILTER TECHNICAL SPECIFICATION



Filter Model	Inlet Flow Range (CFM)	Air Connection (In/Out)	Maximum Inlet Temperature (°C)
KC-Micro -10	10 CFM to 45 CFM	1/2"	80
KC-Micro - 46	46 CFM to 80 CFM	3/4"	80
KC-Micro - 81	81 CFM to 180 CFM	1"	80
KC-Micro - 181	181 CFM to 280 CFM	1-1/2"	80
KC-Micro - 281	281 CFM to 400 CFM	2"	80
KC-Micro - 401	401 to 600 CFM	2"	80
KC-Micro - 601	601 to 750 CFM	2-1/2"	80

# APPLICATION



## CONTACT DETAILS



# KYROS COMPRESSORS LLP

We are ISO Certified Company

(M) : +91 97149 79030 / 84878 11248 / 84878 76248

[www.kyroscompressors.com](http://www.kyroscompressors.com) | [pavan@kyroscompressors.com](mailto:pavan@kyroscompressors.com)

### 1. FACTORY & MNC OFFICE

Fortune South Shed No. 20, B/H Gamthi Hotel,  
Naroda, Ahmedabad - 382330

### 2. FACTORY

Gurugram, Haryana.

### BRANCHES AND DEALERS

Mumbai / Salvsa / Hyderabad / Banglore / Jaipur / Jodhpur  
Bikaner / Rajkot / Delhi / Faridabad / Gurugram / Patna

**Customer Satisfaction is our First Priority**

**"Nature is wonderful gift by god to everyone,  
Conservation of it, that is the best return gift to God."**